



The Winkworth Pottery

COMPANY

BESPOKE WEDDING POTTERY CATALOGUE

Spring 2021 to Spring 2022





CONTENTS

ABOUT US

<i>The Wirksworth Pottery Company</i>	3
---------------------------------------	---

WHAT WE DO

<i>Services we offer</i>	3
--------------------------	---

PRODUCTS

<i>Vases</i>	4
<i>Coasters</i>	5
<i>Shot 'Glasses'</i>	7
<i>Additional favours & place settings</i>	8
<i>Bespoke Thank you gifts</i>	9

PROCESS

<i>How we make the items</i>	10
------------------------------	----



ABOUT US

Wirksworth-based ceramicist, Hannah Buchanan studied 3D Design : New Practise at Loughborough University where she trained in wood, metal, glass and ceramics where she specialised in Ceramics and leather for her final two years and her love for ceramics grew.

After graduating, Hannah secured a job on the Design team as a Glaze Developing Technologist for the world renowned Denby Pottery. In this position she helped create many of the glazes that can still be purchased today, some of which have won awards.

With the help of her partner, Ed, they created the Wirksworth Pottery Company in 2019. Today, Hannah enjoys the opportunity to create handmade and bespoke ceramics in the pottery studio with their dog Zeus, in the hills surrounding Wirksworth, Derbyshire.

SERVICES WE OFFER

We handmade all of our pottery which means we have the ability to make items specific to you. We make a variety of products which can make your special day unique to you and stand out from the crowd.

- Off the shelf products to compliment your wedding
- Bespoke favours & place settings
- Hand embossing— embossing stamps or individual names.
- Litho printing—printing of names or images.
- Colour matching of our products to your colour scheme— requires one to one to discuss possibility and pricing.

PRODUCTS

VASES

Small Carafe Vase

Height - 12 cm*

Base Diameter - 5.5 cm*

Neck Diameter - 4 cm*

* - +/- 0.5cm due to shrinkage during firing.

Handmade earthenware with high gloss speckled glazes.

Cost : £22 Each



Large Carafe Vase

Height - 18.5 cm*

Base Diameter - 9.5 cm*

Neck Diameter - 8 cm*

* - +/- 0.5cm due to shrinkage during firing.

Handmade earthenware with high gloss glazes.

Cost : £49 Each



Tall Cylinder Vase

Height - 30 cm

Diameter - 9cm

* - +/- 2cm in size due to shrinkage during firing.

Handmade earthenware with high gloss glazes.

Cost : £42 Each



PRODUCTS—COASTERS



Embossed Coaster—Bespoke Stamp (Favour)

Description:

One bespoke stamp is created and all coasters are embossed with the same pattern. These are great for favours.

Height — 0.5cm

Diameter—9cm

* - +/- 0.2cm due to shrinkage during firing.

Handmade earthenware with gloss glaze

Cost: Price dependant upon requirements

- Quantity required, Timescale, Colour matching, Stamp cost.

Embossed Coaster— Individual Embossing (Favour & place setting)

Description:

Each coaster is embossed with different text such as names, which make these coasters double up as both favours and place settings.

Height — 0.5cm

Diameter—9cm

* - +/- 0.2cm due to shrinkage during firing.

Handmade earthenware with gloss glaze

Cost: Price dependant upon requirements

- Quantity required, Timescale, Colour matching.
- Choice of Typewriter font or Arial font.



PRODUCTS—COASTERS

Coaster—Litho Print (Favour & place setting)

Description:

Coaster with ceramic transfer which is fired on after glaze process—allows text or logo to be fired on. Possibility for any text or logo to be applied to each coaster. Can colour match font to any CMYK colours, metallic finishes are not possible. Great for favours and place settings.

Height — 0.5cm

Diameter—9cm

* - +/- 0.2cm due to shrinkage during firing.

Handmade earthenware with gloss glaze

Cost: Price dependant upon requirements

- Quantity required, Timescale, Colour matching, quantity of litho print required.



PRODUCTS—SHOT GLASSES



Shot “Glass”— Plain (Favour)

Description:

Ceramic shot “glass” - they make great favours to team up with sloe gin for a toast with a difference.

Measurements - 4.5cm x 4.5cm*

* - Measurements can vary due to shrinkage during firing.

Glazed Earthenware.

Cost : £5 each.

Shot “Glass”— Litho Print (Favour & place setting)

Description:

Ceramic shot “glass” with ceramic transfer which is fired on after glaze process—allows text or logo to be fired on. Possibility for any text or logo to be applied to each coaster. Can colour match font to any CMYK colours, metallic finishes are not possible. Once again they make great favours to team up with sloe gin for a toast with a difference but also double up as place settings.

Measurements - 4.5cm x 4.5cm*

* - Measurements can vary due to shrinkage during firing.

Glazed Earthenware.

Cost : Dependant upon requirements

- Quantity required, Timescale, Colour matching, quantity of litho print required.



PRODUCTS—ADDITIONAL FAVOURS & PLACE SETTINGS



Hanging decoration—Plain (Favour)

Description:

These make great favours with various shapes available. (See star)

Cost: Price dependant upon requirements

- Quantity required, Timescale, Colour matching, Shape & String.

Hanging decoration— Textured (Favour)

Description:

These make great favours with various shapes available. The texture adds more depth to each one. (See textured heart).

Cost: Price dependant upon requirements

- Quantity required, Timescale, Colour matching, Shape, String & texture.

Hanging decoration— Embossed (Favour & place setting)

Description:

These make great favours with various shapes available, (See star). Individual names can be embossed into each one allowing them to double up as place settings as well as favours.

Cost: Price dependant upon requirements

- Quantity required, Timescale, Colour matching, Shape & String.
- Typewriter or Arial font available.

PRODUCTS—ADDITIONAL FAVOURS & PLACE SETTINGS

Hanging decoration— Litho print (Favour & place setting)

Description:

These make great favours with various shapes available, (See star). Litho print is ceramic transfer which is fired on after glaze process—allows text or logo to be fired on. Possibility for any text or logo to be applied to each coaster. Can colour match font to any CMYK colours, metallic finishes are not possible. They make great favours but also double up as place settings.

Cost: Price dependant upon requirements

- Quantity required, Timescale, Colour matching, Shape & String.

PRODUCTS— BESPOKE THANK YOU GIFTS

All products listed can be turned into bespoke thank you gifts.

It is possible for us to apply text such as the wedding date or message or your choice to all of the pieces as well as our 1 pint beer tankard (see right).

They make unique memorable gifts which they can cherish as a reminder of your special day.

Cost: Price dependant upon requirements

- Item, text, timescale, quantity, colour.



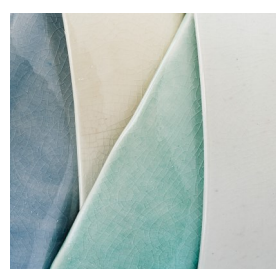
AVAILABLE GLAZES

Crackled glazes

Description:

Due to the crackled finish, these glazes add an additional layer of texture to the items.

Left to right— Sage, Cobalt, Slate, Lemon, Cyan, Cotton, Ivory, Speckled White

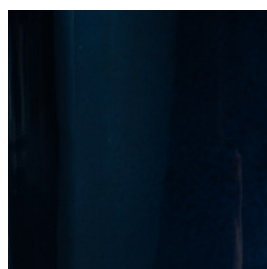
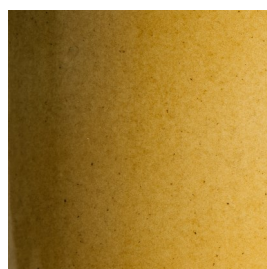


Non- crackled glazes

Description:

A simplistic, high gloss finish without the crackle.

Left to right— Ochre, Sky, Midnight Blue, Royal Blue, Jade





PROCESS

How we make the items.

Vases, tankards and shot "glasses" are slip casted. This process allows us to create mini mass production which allows us to achieve a high standard of repeatability. This process is completed by making plaster moulds which we pour in liquid clay and after sometime, remove any excess clay. The items are then bisque fired to make them hard and non-porous. The products are then glazed, we do this by either dipping in glaze or hand spraying each one, after this they are fired again. If any text is required, this is then applied via Litho print and then fired for the third and final time.

Coaster and decorative favours are each individually hand cut out of clay which has been rolled out to the specific thickness. Each favour is then hand embossed (if required) and then carefully dried to prevent warping before being bisque fired to make hard and non-porous. The products are then glazed, we do this by either dipping in glaze or hand spraying each one, after this they are fired again for the second time. If the items are embossed then the process is now complete. If any text is required via Litho print then this is applied at this stage and fired for the third and final time.